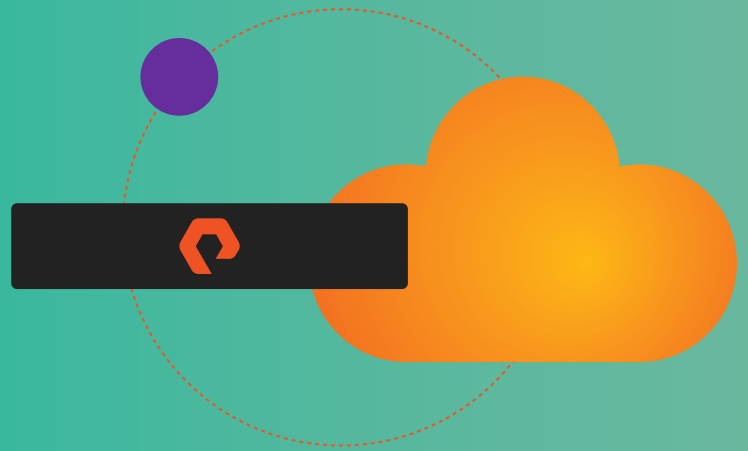


CERTIFICATION OVERVIEW



PORTWORX® ENTERPRISE PROFESSIONAL

MANAGE YOUR ENTIRE PORTWORX ENTERPRISE BY PURE SOLUTION

QUALIFICATIONS

- Demonstrate two or more years industry experience
- Have one year of Portworx Enterprise product experience
- Complete the recommended training (optional)

EXAM TOPICS

- Design and Architecture
- Cluster Operations and Administration
- Security
- Observability and Troubleshooting
- Business Continuity

Be a top performer and get the credit you deserve when you become a Pure Certified Portworx Enterprise Professional. The Portworx Enterprise Professional Certification highlights your competence, proficiency, knowledge, and career commitment. Be the best asset to your company and help them achieve the Modern Data Experience with Portworx by Pure.



PORTWORX®

ENTERPRISE PROFESSIONAL

WHAT'S IN IT FOR ME?

As a Pure Certified Portworx Enterprise Professional, you'll validate your knowledge, skills, and abilities around Portworx by Pure technology. Specifically, you'll demonstrate your design, operations and administration, security, troubleshooting, and business continuity skills.

According to CompTIA, certifications can significantly enhance your career*

91%

of employers believe IT certifications play a key role in the hiring process and are a reliable predictor of a successful employee.

60%

of employers use certifications to confirm subject matter expertise.

90%

agree IT-certified individuals are more likely to be promoted than those without IT certifications.

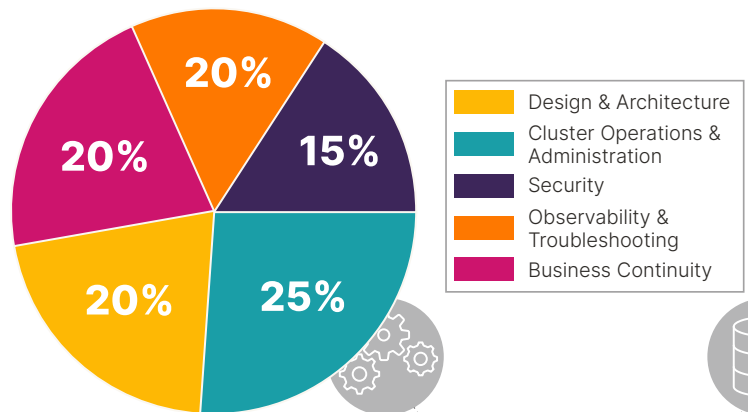
EXAM OVERVIEW

The Pure Certified Portworx Enterprise Professional exam measures your proficiency in the professional management of Portworx by Pure. This exam helps to validate the knowledge, skills, and abilities required of successful Portworx professionals and engineers.

Successful candidates have at least one year of Portworx by Pure professional and engineering experience. Successful candidates have deep knowledge of Portworx by Pure.

EXAM TOPICS

Exam topics include the following:



PORTWORX®

ENTERPRISE PROFESSIONAL

RECOMMENDED CERTIFICATION PREPARATION

You can complete the following steps to prepare for the exam:

- Demonstrate two or more years industry experience
- Have one or more years of Portworx by Pure product experience
- Complete the following Pure PEAK on-demand course (optional).
 - [Portworx Fundamentals](#)



Portworx Fundamentals can be accessed at:  **PUREACADEMY**

- Enroll in and complete the following Pure PEAK on-demand, instructor-led or virtual instructor-led courses (optional):
 - [Portworx Enterprise Administration](#)
 - [Portworx Enterprise Administration Capstone](#)

ADDITIONAL RESOURCES

Refer to these additional resources from Pure PEAK as you prepare for your Pure Certified Portworx Enterprise Professional exam.

Resources from Pure PEAK

- Visit our growing library of knowledge articles at [Pure PEAK Knowledge](#)
- Explore best practices in our [Pure PEAK Community](#)
- Visit our Education at our website: [Pure Portal](#)

Resources from Pure Storage

- Tune in to upcoming [webinars](#) to see relevant content
- Get [direct access](#) to our leaders, experts, partners, and latest product news

SIGN UP FOR THE EXAM

Complete the following steps to register for and take the exam.

- Register for and schedule the exam. Find instructions under Frequently Asked Questions at [Pure Storage Certifications](#).

